



**LANDMARK
UNIVERSITY**



**UNDERGRADUATE
ADMISSION
BROCHURE**



LANDMARK UNIVERSITY

UNDERGRADUATE ADMISSION BROCHURE



Km 4 Ipetu-Omu-Aran Road,
P.M.B. 1001, Omu-Aran,
Kwara State, Nigeria



www.lmu.edu.ng
www.admission.lmu.edu.ng



+2347038205649, +2348160864515

DR. DAVID OYEDEPO, FNAE

— CHANCELLOR, LANDMARK UNIVERSITY —

**PRINCIPAL OFFICERS
OF THE UNIVERSITY**

PROFESSOR CHARITY AREMU

B.Agric, M.Sc, Ph.D, (Unilbadan and FUNAAB)
VICE-CHANCELLOR

ADEFUNKE .F. OYINLOYE

B.A., MILR, MNIM, MCIPM.
REGISTRAR

FATIREGUN C. OLUMUYIWA

B.Sc., ACA,
DIRECTOR, FINANCIAL SERVICES

DR. RASAQ ANIMASHAHUN

B.Sc., M.Sc., Ph.D
DEAN, STUDENT AFFAIRS

PASTOR OLUTIMILEHIN OMOTUNBI

CHAPLAIN



DR. DAVID OYEDEPO, FNAE
CHANCELLOR, LANDMARK UNIVERSITY



PROFESSOR CHARITY AREMU

B.Agric, M.Sc, Ph.D, (Unilbadan and FUNAAB)
VICE-CHANCELLOR



ADEFUNKE .F. OYINLOYE

B.A., MILR, MNIM, MCIPM.
REGISTRAR



OLUMUYIWA FATIREGUN

B.Sc., ACA
DIRECTOR,
FINANCIAL SERVICES



DR. RAZAQ ANIMASHAHUN

B.Sc., M.Sc., Ph.D
DEAN, STUDENT AFFAIRS



PASTOR OLUTIMILEHIN OMOTUNBI

CHAPLAIN

TABLE OF CONTENTS

| | |
|--|----|
| University Officers | 2 |
| Chancellor's Picture | 3 |
| Principal Officers' Pictures | 4 |
| Table of Contents | 5 |
| Word from the Chancellor | 7 |
| Vice-Chancellor's Remarks | 9 |
| Registrar's Remarks | 10 |
| About Landmark University | 11 |
| Our Vision | 13 |
| Our Mission | 14 |
| Our Founding Philosophy | 15 |
| Our Core Values | 16 |
| Admission Advert | 19 |
| Why you should choose Landmark University | 20 |
| Chaplain's Remark | 21 |
| Dean of Student Affairs' Remarks | 22 |
| The Landmark Student | 24 |
| Our International Student Community | 24 |
| Accommodation/Halls of Residence | 25 |
| Health Services | 26 |
| University Library (Centre for Learning Resources) | 27 |
| Centre for Systems and Information Systems | 28 |
| Landmark University Development Ventures | 29 |
| Alumni President Speaks | 30 |
| Our Alumni network | 31 |
| Pathfinders' Testimonies | 33 |
| Landmark University Kings and Queens Speak | 37 |
| Testimonies of Proud LMU Parents | 40 |
| Comments by University Guests | 44 |
| Admission Requirements | 45 |
| COLLEGE OF AGRICULTURAL SCIENCES | 46 |
| Agriculture Economics | |
| Agriculture Extension & Rural Development | |

Animal Science
Aquaculture and Fisheries Management
Crop and Soil Science

COLLEGE OF ENGINEERING

Agricultural Engineering
Chemical Engineering
Civil Engineering
Electrical & Information Engineering
Mechanical Engineering
Mechatronics Engineering

50

COLLEGE OF BUSINESS & SOCIAL SCIENCES

Accounting
Business Administration
Economics
International Relations
Mass Communication
Political Science
Sociology

55

COLLEGE OF PURE & APPLIED SCIENCES

Biochemistry
Computer Science
Food Science and Nutrition
Industrial Chemistry
Mathematics
Microbiology
Physics

59

Other Key information
Fees
Application
Prohibited Items
Hall of Residence Requirement
Printing of Admission Letter

63

63

63

65

67

68

WORD FROM THE CHANCELLOR

RECONSTRUCTING DESTINIES

The Power of Exposure

As we set out to witness the beginning of what promises to be another great University, it is my pleasure as Chancellor, to welcome you to a Royal Academy where Kings and Queens are raised. Landmark University was founded to provide a context where a self-reliant and solution-driven mentality is inculcated in our students. It is a place where human development issues are core and are inextricably woven into the academic curriculum. Our objective is to raise the awareness of our staff and students towards leadership and positive mentality. We lay emphasis on these for the enhancement of their self-worth and dignity.

Our Vision as a University is “to be a leading world class university, by spearheading an agrarian revolution on the African continent through the exploration of hidden treasures in the mother-earth thereby restoring the dignity of the black race.” Our commitment is to raise the modern day Josephs, Moses, Esthers, Nehemiahs of our great continent. Our mission is to empower students towards national reconstruction, reconciliation, socio-economic development and restoration of human dignity by driving a change philosophy via the vehicle of higher education.

Our disciplinary stance as a University is to guarantee the release of quality graduates at the end of their stay as students in this citadel of learning. The requirement of worthiness in character and learning in preparing solution-providing leadership for our continent and our nation is a task and therefore we will do all in our power as enabled by God to “tend”, “water” and “fertilize” the “gentle plant” that is symbolic of the Landmark student. However, we will also weed the 'suffocating tares' in this 'academic Garden of Eden'. We are

committed to raising an army of Reformers.

According to George Washington, “Discipline is the soul of an army, making small numbers formidable procuring success to the weak and esteem to all”. We vow to maintain discipline as our watchword.

For you to maximize your adventure as a student of Landmark University, you must of necessity gain knowledge on how to get the right things done at the right time. This is because if one does not get exposed to the right ideas and values, one may find it difficult to excel. Excellence is a product of exposure. It is always a requirement that a man of purpose will maximize his adventure in life. Isaac Newton said, “If I have seen any further, it is because I stood on the shoulders of those who went ahead of me”. That is why no price will be too much to pay for exposure. Let us recognize fathers who have made marks in our field and go after them, so as to enhance our rate of accomplishment and worth.

Landmark University is a home away from home and in our in-loco parentis role, we speak and impact value on our students. As a centre of unlimited opportunities and possibilities, without proper exposure and alignments, a student will not maximize the benefits that the University offers.

In the light of the various challenges we face as a nation and continent, we are in dire need of world changers who will be changed through exposures to take charge of the destinies of men and make changes that they want to see happen. Landmark University is a centre where such men and women are groomed and that is why you must maximize the benefits of your studentship privilege. I am confident that you are indeed the chosen of God to ensure that the fallen walls of our nation are rebuilt and made to stand upright! Make the best of your time at Landmark University and ensure that every day counts towards helping to actualize your vision of becoming a new generation leader that you were born to be.

Once again, I welcome you all to an exciting adventure at Landmark University – the birthplace of Kings and Queens of our new generation, a Royal Academy. It is my prayer that your great dreams will find absolute fulfillment as you go through our unique production line in the name of our Lord Jesus Christ, God bless you.

Dr. David Oyedepo (Ph.D.)
Chancellor and Chairman, Board of Regents

VICE-CHANCELLOR'S REMARKS

Landmark University is a Christian-based institution that is built on Christian ethos with a sound academic and moral standard to restore the dignity of the black race through an agrarian revolution pursuit

Our uniqueness is found in our Departure Philosophy, our Vision, Mission, and the Core Values which created a platform to fulfill our tripodal mandate of teaching, research, and community impact.

The intentional steps towards this direction are evident in the set strategic goals and this has found expression in our current enlistment in the Times Higher Education (THE) Impact Rankings, Publication status, and SciVal Ranking of the University. No doubt, the strong and passionate support of our four Colleges of Agricultural Sciences (CAS), Pure and Applied Sciences (CPAS), Engineering (COE), and Business and Social Sciences (CBS) has defined our academic excellence and the broad base visibility.

Above all, Landmark University soars on the massive support from the proprietary base by creating enabling ambiance through a friendly school fees payment structure, David Oyedepo Foundation (DOF), E-learning platform, Hi-tech facility such as Modern classroom, Medical Centre, Centre for Learning Resources under uninterrupted power supply.

All these life-applicable training support facilities can favourably compete with international best practices across the globe. Our faculty, staff, and students receive unwavering support for enhanced training and development which defines their competitiveness in the world of works.

Come and join the train of trailblazers where we focus and drive excellence!

Professor Charity Aremu

Vice-Chancellor, Landmark University

REGISTRAR'S REMARKS

Tucked away in the ancient town of Omu-Aran, Kwara State, Nigeria, is Landmark University. Safety, Security and Serenity are the air you breathe as you drive into the Campus. A great ground for meditation and inspiration. The beauty of the campus is awe-inspiring. Breath-taking. This is where young boys and girls are coronated into Royalty. Kings and Queens they are christened, soon as they are inducted into this Royal Academy. They are raised, pruned, re-orientated through an extremely rigorous academic and non-curricula process, run by committed Tutors; and targeted at bringing out the Diamond, I mean the Preciousness in them. Thereafter, they are launched out as Pathfinders, Pacesetters, Trailblazers, and Outstanding Performers. All those who faithfully and patiently go through the rigours of training herein leave the Academy holistically changed and ready to take on the world. They are changed for greater glory, pride to the African Race. This is our unalloyed promise to parents and guardians, who have chosen to go this route of partnership with us in giving their children/wards the Total Education. Welcome to Landmark University.

Adefunke F. Oyinloye

Registrar, Landmark University

ABOUT

LANDMARK UNIVERSITY

Landmark University is a private University established by the Living Faith Church World Wide and it is committed to raising leaders who shall be equipped with skills and character to lead the world in meeting the FOOD need of humanity.

The focus is to assist the nation and indeed the continent of Africa in self - discovery so that it may recover her leading position in education and civilization, as it was in the 20th century. The University is poised to make the Nigerian nation fully, competitively and profitably engage her comparative advantage in human and agricultural resource potentials and development.

While the University was licensed by National Universities Commission (NUC) on March 7, 2011 to run undergraduate programs in the Colleges of Agricultural Sciences; Sciences and Engineering, Business and Social Sciences; it actually opened its doors for full operations on March 21, 2011. Between then and now, the University has evolved into a 4-College University, running 23 fully accredited Programmes. The 4 Colleges are: Colleges of Agricultural Sciences; Pure and Applied Sciences, Engineering, and Business and Social Sciences.

It also has professional affiliations and collaborations with several local and International bodies, in satisfying its quest to release graduates who will be fully and professionally equipped for the World of Work.

The University in its few years of existence has received over six thousand Indigenous, as well as International students from across Africa, Europe and the United State of America.

Landmark is also gradually climbing the ladder of recognition amongst the Comity of World Universities with its annually increasing statistics in Research and Publications.

Being a full boarding University, we fondly refer to Landmark University as “home away from home”, and this creates a compelling stance for members of Faculty and Staff of the University to play the in-loco parentis role to our students whom we refer to as Kings and Queens.

The name “Landmark” was inspired from the compelling establishment purpose which is to advance learning through research by “breaking new grounds” of knowledge and innovation. Names are significant because individuals and corporate entities answer to their names. They remind not only the bearers but also the corporate operators, leaders and stakeholders of the institutions establishment purpose. From this understanding of purpose, they are able to check if the University is truly breaking new grounds of knowledge through research or not.

Landmark University is established to make landmark contributions to knowledge in order to secure increased comfort for humanity by “Breaking New Grounds” in teaching, research and community service as she engages the strategy of promoting collaboration between related disciplines as a conventional university.

The reassuring testimonies of Landmark University graduates – the Pathfinders, as well as parents and guests to the University which stream in from time to time, are the convictions we have that the compelling and overarching Vision of the University will be manifest in no far distance from now.



**To be a leading
world-class University,
by spearheading an agrarian
revolution on the African continent
through the exploration of hidden
treasures in the mother-earth
thereby restoring the dignity of the
black race.**

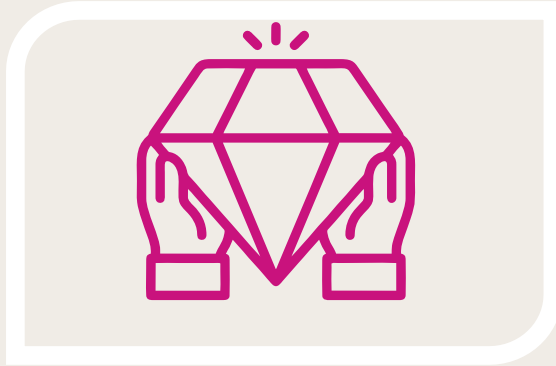


OUR MISSION



- I. Raising a generation of solution providers through a qualitative and life-applicable training system that focuses on value and creative knowledge;**
- ii. Raising a new generation of leaders through a broad-based qualitative education built on sound biblical principles culminating in the birth of breadwinners, job creators and world changers;**
- iii. Raising an army of reformers who shall redeem the battered image of the black race and restore her lost glory as these well-equipped graduates begin to build the old waste, repair the wasted cities and raise the desolation of many generations as Pathfinders.**

OUR FOUNDING PHILOSOPHY



Landmark University's philosophical platform is anchored on its motto, ***"Breaking New Grounds."*** It is a voyage in discovery, a catalyst of change, a knowledge mill designed to challenge the mind to think out solutions to challenges of the human race. The object of the philosophy of change shall revolve around the following:

- i. Facilitating the Proprietors conviction on the urgent need to discover, develop and engage the great human and natural resources potentials of the nation.
- ii. Focusing the University's learning efforts around the urgent need to minimize national poverty occasioned by a limited translation of received and acquired knowledge into tangible and quality output through strategic interface with research and development.
- iii. Facilitating the realization of the Promoters' convictions that the heavy investment warranted by this establishment decision will enable wider attention and deeper effect to the achievement of the prime objectives of developing the nation's human and natural resource capacities.
- iv. Giving fulfilling consciousness to the black man in terms of taking up personal responsibility for growth and development on the basis of his rich endowments.



Our Core Values of Spirituality, Possibility Mentality, Capacity Building, Integrity, Responsibility, Diligence and Sacrifice define our commitment to excellence. Landmark University is committed to transforming students into expert thinkers, solution providers, innovative managers and resourceful technocrats in all fields of learning.

Our Core Values are the defining components of the Landmark University Vision, and they reflect our beliefs in the encrypted truths that firmly define our purpose and the underlining ethos for our existence as a University.

As a University, we strongly uphold the practices embedded in our Core Values, and strive to integrate these values into all facets of our functions and operations as a University. We expect that students of Landmark University will visibly demonstrate and integrate the virtues embedded in these Core Values in their daily conduct as students who are being raised along the Vision lines of raising a new generation of Leaders for the Continent of Africa on the Total

SPIRITUALITY

This forms the bedrock of our existence as a University and defines every aspect of our operations and context. The Christian ethos under guard our activities and conducts at all times, and every student of Landmark University is expected to exhibit character traits and dispositions of a Jesus-centered heritage. The Jesus - factor centered approach to all issues is non-negotiable and central in the pursuit of our mandate in raising a new generation of leaders and in the realization of the objectives of our purpose. To this extent therefore, students will be committed to maintaining a high level of spirituality and shall act in such manner as to facilitate their spiritual growth as well as work out ways to evolve and implement a spiritual development plan. Attendance at Chapel Services is a compulsory part of students' spiritual development where a Bible and notebook are essential kits for the service. Students are expected to demonstrate a deep reverence for God at all times.

POSSIBILITY MENTALITY

Students of Landmark University are expected to exhibit a royal carriage, attitude, habits and character, exuding self- confidence and dignity at all levels via mode of communication, interaction and general conduct. They are expected to see themselves as persons of worth and value, taking pride in their uniqueness as individuals with a positive mind-set devoid of any trace of inferiority but an overarching belief in self and nation as well as articulating their core purpose as individuals and a possibility mindedness directed towards its positive achievement and contribution.

CAPACITY BUILDING

This is related to the commitment to a life style of continuous academic and personal development, striving to be continuously relevant to the overall vision requirement of the University as well as its core mission, goals and objectives. Students are encouraged to constantly seek paths for self-improvement. Openness to learning new skills and taking on board new information is a trait expected of Landmark University students in order to cause a robustness and depth in the quality of their output.

INTEGRITY

Students of Landmark University are expected to demonstrate traits of honesty, uprightness and trustworthiness at all times. They must ensure that they are accountable persons, whose words are their bond, transparent and open in all their dealings. They shall flag truth as a virtue at all times particularly in their conduct, and also integrity in matters of conduct during examination, obeying the rules and regulations of the University, being spiritually sound, morally upright and having a good conscience are indications of integrity.

RESPONSIBILITY

We are committed to inculcating a sense of responsibility in our students. We expect them to do what is right at all times. We believe in the place of discipline for effective leadership. We expect our students to respond to issues as demanded not as convenient. Here at Landmark University, our students are not permitted to do what they like but what is right. Punctuality at lectures as well as prompt response to assignments as demanded are desired traits of responsibility.

DILIGENCE

Students of Landmark University are expected to be strongly committed to their assignment. We expect that they will extol the virtues of hard work and deliver qualitative output and constantly strive towards excellent attainment of high standards in all they do. We believe that commitment is the greatest qualifier for attainment, hence our celebration of this trait in preparing students for leadership responsibilities, post-graduation.

SACRIFICE

Sacrifice is the ultimate price for outstanding leadership. It is the quality of sacrifice that defines great leadership. We therefore expect students of Landmark University to go the extra-mile and pay the extra- price in the attainment of their set goals. Raising an altar of sacrifice in pursuit of their dreams is what must distinguish and define the Landmark University Student.



LANDMARK UNIVERSITY

...breaking new grounds

km. 4, Ipetu Omu-Aran Road, P.M.B 1001,
Omu-Aran, Kwara State, Nigeria.

ADMISSION INTO FULL-TIME DEGREE PROGRAMMES OPEN

4 INSTALMENTS
FAMILY FRIENDLY
SCHOOL FEES
PAYMENT
PROTOCOL
...visit University
website for more details

**GET YOUR
DEGREE
IN A WORLD-CLASS
UNIVERSITY
WITH AWARD-WINNING
FACULTY AND STUDENT
IN RECORD TIME**



UNDERGRADUATE PROGRAMMES

COLLEGE OF AGRICULTURAL SCIENCES

- Agriculture Economics
- Agriculture Extension & Rural Development
- Animal Science
- Aquaculture and Fisheries Management
- Crop and Soil Sciences

COLLEGE OF BUSINESS & SOCIAL SCIENCES

- Accounting
- Business Administration
- Economics
- International Relations
- Mass Communication
- Political Science
- Sociology

COLLEGE OF ENGINEERING

- Agricultural Engineering
- Chemical Engineering
- Civil Engineering
- Electrical & Information Engineering
- Mechanical Engineering
- Mechatronics Engineering

COLLEGE OF PURE AND APPLIED SCIENCES

- Biochemistry
- Computer Science
- Food Science & Nutrition
- Industrial Chemistry
- Microbiology
- Physics
- Mathematics

OUR UNIQUENESS:

- ✓ All courses are fully accredited by NUC and other requisite professional bodies
- ✓ E-library is accessible anywhere on campus with zero megabyte
- ✓ Award-winning and top-notch members of faculty
- ✓ Scholarship opportunities
- ✓ Ultra-modern medical facility
- ✓ Smart classrooms
- ✓ Stable electricity and water supply
- ✓ Internet facility
- ✓ Robust Alumni base
- ✓ Serene and beautiful laid out campus
- ✓ Entrepreneurial Development Studies
- ✓ Diploma in Agripreneurship



FROM THE CHANCELLOR

Sound education is the sure foundation of every great nation. Not just education this time, but the right kind of education. We desire not just a diagnosis; we thirst for an action plan that turns rhetoric into positive experience in canvassed values. The Vision of Landmark University is a vision for rebirth, national transformation and rejuvenation of our education values.

DR DAVID OYEDEPO
Chancellor, Landmark University

APPLICATION:

www.admission.lmu.edu.ng

Tel: (+234) 816 0864 515, 703 8205 649



www.admission.lmu.edu.ng



LandmarkUniversity



LandmarkUnivers



LandmarkUnivers



Landmark University



WHY YOU SHOULD **CHOOSE** LANDMARK UNIVERSITY

At Landmark University, we go beyond the certificates, formal teaching and learning, as emphasis is placed on a holistic education that guarantees a life-transforming experience for students through their connection with God's purpose for life.

SPIRITUALITY

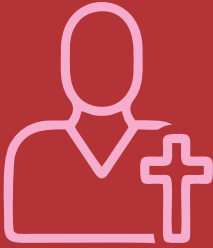
Man is essentially a Spirit, he has a Soul and lives in a Body. Having this understanding, we expose our students to these dynamics through various spiritual programmes and engagements; under the spiritual leadership of the Chancellor, Dr. David O. Oyedepo.

TOTAL MAN CONCEPT

Our custom built programme of Total Man Concept (TMC) is focused on the physical, Spiritual and mental needs of man. It is focused on preparing and equipping our students with the relevant life knowledge, skills and mind-set to confront everyday challenges, upon graduation.

CONDUCTIVE AMBIENCE

The University sits on a fertile land expanse with suburban characteristics making it an escape from the bustling life of the city. Our uncommon green scenery locks you in nature's womb, giving a refreshing experience.



CHAPLAIN'S REMARKS

PASTOR OLUTIMILEHIN OMOTUNBI

"A highly developed value system is said to be like a compass that serves as a guide that points to the right direction."

The strong seven core values of Landmark University – Spirituality, Possibility mentality, Capacity building, Integrity, Responsibility, Diligence and Sacrifice make her the best place for anyone that desires to have quality education.

Likewise, being disciplined and the drive to see everyone spiritual and happy serving God is one unique culture about Landmark University which makes it different from other Universities.

Any system or organization that points one towards loving God is a system that can rewrite the story of any nation. Therefore, the God factor of this University is the number one factor that should interest everyone to enroll his/her children to study here.

The conducive environment of the University is just perfect for the raising of any child, Proverbs 22:6 – Train up a child in the way he should go and when he is old he will not depart from it.

As you come to be trained here in Landmark University, the guarantee is that God will show you the way to go in life.

Therefore, at the Chaplaincy, we welcome you to the presence of God, and to a Campus that is on fire for Jesus. (2 Chro. 7:14).



DEAN OF STUDENT AFFAIRS' REMARKS

DR. RAZAQ ANIMASHAHUN

The Directorate of Student Affairs is glad to beckon on you to join the academy of Kings and Queens of Landmark University.

The Directorate of Student Affairs is a key unit of the University that is charged with the direct obligation of supervising the welfare, academic and extra-curricular development and enforcement of discipline of our Kings and Queens. Our vision in the Directorate is to build the character and the creative content of student through the 3-tier responsibility of Student Welfare, Student Development and Student Discipline, thereby making them to be solution providers and trailblazers and pathfinders in line with the vision of becoming a leading world-class University.

At the helm of affairs of the Directorate is the Dean, an appointed Senior Faculty of the University. He is assisted by the Sub-Dean who supervises the activities of the Units in the Directorate. The sub-units of the directorate which are Welfare Unit, Student development, Sports Unit, Residency Unit, Counseling Unit, Monitoring and Surveillance Unit and Attendance Unit contribute to the 3-tier responsibility of Directorate. The operations of the directorate are guided by the Student Handbook.

The decision of coming to Landmark University is a choice for excellence, because the University environment is conducive for your academic excellence, and social and personal development.

We look forward to receiving you in the Directorate where you will have home away from home experiences.

A trial will surely convince you!



Second College Building



University's Chapel



The First College Building

THE LANDMARK STUDENT

The Landmark University student is an excellent student in outlook. Landmark deliberately facilitates a concentration of outstanding students. Hence in its admission process, the University emphasizes excellence and spirituality with the aim of building a community of global students who are unequivocally equipped with relevant knowledge and skills to function in any part of the globe. Every Landmark student is guided by the University Core Values, and exhibits a high sense of responsibility which reflects in his/her commitment to given assignments.

OUR INTERNATIONAL STUDENT COMMUNITY



Landmark University is open to the world. The University has continued to attract students from across the globe. Landmark, at inception, admitted over 20 International students from several African Nations, most especially into its agricultural programmes. Like their indigenous counterparts, the International students enjoy the in loco parentis privileges which makes the University a home away from home for them.

ACCOMMODATION/HALLS OF RESIDENCE



The University has eight (8) halls of residence with the capacity of over 4500 bed spaces. These halls are contemporary, attractive and tastefully furnished with beds, wardrobes, and desks for the comfort of our students. The halls are located strategically within walking distance from all other University's learning, leisure and religious facilities. The halls of residence are well equipped with both learning and recreational facilities for students' overall wellbeing.



The University has a modern NHIS accredited medical centre which is a one-stop shop for all health services. It is equipped with state of the art equipment, and renders diagnostic, curative and counselling services.



Our Ultra-Modern Health Centre



The Dentistry



The Medical Laboratory

UNIVERSITY LIBRARY

(Centre for Learning Resources)



Named Centre for Learning Resources (CLR), the Landmark University library has a huge collection of current physical and electronic resources that cut across the various programmes in the University signifying our commitment to excellence and global best practices. This has been validated by National Universities Commission (NUC) as well as several professional accrediting bodies during various accreditation exercises whereat the University library has always performed excellently well.



Students studying at the University Library

In line with our mandate of raising solution thinkers and an army of reformers, as well as our quest towards removing geographical boundaries in learning, the CLR subscribes to a number of electronic resources. These include the Ebook Central, EBSCO, Sciencedirect, Jstor, Hinari, OARE, TEEAL among others. The Ebook Central platform alone houses over five million books and other documents which are accessible to faculty, staff and students from the comforts of their homes and halls of residence; thereby making teaching and learning easy.

In our bid to further drive access and usage of these avalanche of electronic resources, the 'no megabyte initiative' was introduced to enable faculty, staff and students use these resources without using internet.

CENTRE FOR SYSTEMS AND INFORMATION SERVICES



Students listening to a lecture at the Simulation Laboratory

Landmark University boasts of its seamless IT-driven operations facilitated by the Centre for Systems and Information Services (CSIS). Both staff and students of the University enjoy all year round internet and intranet services. The CSIS facilitates ICT-enabled teaching and learning. Our smart classrooms are well -

equipped with interactive screens. CSIS through the Landmark University Professional Certification Courses (LUPCC) also provides a platform for ICT proficiency for students. This prepares them for certification in Microsoft Office Specialist (MOS), Microsoft Certified Educator (MCE), Microsoft Technology Associate (MTA), ORACLE, Autodesk Exams, Adobe Exams, IC3, and EC-Council amongst others.

LANDMARK UNIVERSITY DEVELOPMENT VENTURE

Landmark University is daily working assiduously towards becoming a self-sustained community, and the Landmark University Development Venture amongst other subsidiary units of the University has a part to play in achieving this quest. It provides a number of service initiatives on campus which satisfy the essential daily needs of the university community. These services are provided by its outlets, namely: Cafeteria, Bakery, Pastry Section, Water Factory, Shopping Mall, Butteries (situated in the Halls of Residence and College Building), Guest House, Bookshops, Laundry, Car Wash, Boutique, and Business Centre.



The University Shopping Mall



Buttery located in the College Building

ALUMNI PRESIDENT SPEAKS

LMU: The Breeding Ground of "PATHFINDERS"



Nweke-Love Henry C.
B.Sc., MSc., PhD (in-View)
President, Landmark
University Alumni
Association

For a lot of us proudly known as "Pathfinders" today, Landmark University has been a life-changing experience. Being admitted into such a global citadel of learning as young boys and girls; and spending 4-5 years of our lives on this ground has indeed left indelible marks on us as men and women of global impacts in our various fields of endeavour.

We are known as "Pathfinders", a name birthed from our distinct experience in a world-class educational system built to equip its students with skills and character to lead the world in meeting the needs of humanity. From this ground, we emerge not just with a degree, but with a mission; to contribute significantly to the progress and development of the African continent by tracing the old paths leading to new paths, making ground-breaking discoveries and setting the pace for others to follow.

We are indeed privileged to have such a global leader, Dr. David Oyedepo as our Chancellor, Mentor and Life-Coach. Aside from providing us with such a serene and beautiful ambience, conducive for qualitative research and learning, he has always created time to inspire and motivate us. The seven (7) Core values of Landmark University clearly marks us out as a unique breed of individuals who are essentially products of this destiny-moulding institution.

We are therefore ever conscious of our status as "global solution providers" and "vibrant change agents" as privileged products of this amazing institution, Landmark University!

Our **ALUMNI** **Network**

Pathfinders everywhere...



Our **ALUMNI** **Network**

Pathfinders everywhere...



Pathfinders Hangout: Building strong post-LMU Networks



Pathfinder Stella Esene, Light Set (2014) Graduate of Sociology delivering a training on Google Digital Skills



Farm Fun annually organized by Pathfinders for Young persons....passing down the "Agric- culture

Pathfinders' TESTIMONIES



"I had never really had a career plan before getting into Landmark. I was just ready for the next phase, whatever that would be. Joining the Landmark community opened my eyes to a world of possibilities and gave me insight to paths I could take. Growing up in farming household didn't necessarily make me want to take it up as a career but in Landmark, I learned that there's more than one way to build the Nigerian economy through Agriculture. I became an agricultural entrepreneur when as part of a team, we started a company that uses technology to bridge the gap between farmers and consumers.

Now years later, I might not be where I want to be, but I have come really far in the journey of where I plan to be because I learnt the value of vision and discipline in Landmark University.

Pathfinder Lydia Mang Dynamic Set (2015)

Graduate of the Department of Agriculture



I grew up hearing Doctors, Lawyers, Bankers, and Accountants as if they were the only professionals. Little did I know that it was the way these professions were sensationalised.

Landmark University introduced Agricultural profession to me in a unique way, and today, I am enjoying the dividends.

I have been privileged to spearhead 500 hectares of rice plantation in Benue State and 100 hectares in Nassarawa State under the auspices of CBN, BOA, Hebron Integrated Farms and Mills, and Emmadu Green Culture.

All thanks to my alma mater, Landmark University; the Chancellor of Landmark University, Bishop David Oyedepo, who received such a life-transforming Mandate; and the Almighty God.

Pathfinder Odeyinka Olaide Marvel Set (2016)

Pathfinders' TESTIMONIES



"Anywhere I go, people always ask which university I graduated from, this is because of the shining example people see in me. Discipline has never been a problem. I have learnt how to set higher standards for myself. I have met people from different countries. I always put myself in the position of learning something new. It's been great."

Pathfinder Boluwajo Kolawole, Dynamic Set (2015) Graduate of International Relations. Presently studying Law at Newcastle University, UK



Words can't fully express what impact Landmark University has upon my life and destiny. Just by stepping on that ground on the very first day, I had no doubts that my life and destiny will never be the same again. As years passed by, walking the corridors of Landmark I found a total transformation not just in my life but those around me. Landmark unleashed in me the leadership potentials hidden within and the Core Values wired in me over the years have made me a Total Graduate both in character and in learning.

I see Landmark as a new generation Harvard and the birth place of generational leaders who will restore the dignity of the black race, letting the world know it doesn't have to be white to be right.

The love and care I found within the walls of Landmark community is what I will forever cherish. There, I found mothers, fathers, brothers and sisters. To me Landmark University will forever be a home far away from home.

God bless the Chancellor for his uncompromised commitment to his calling that has created such a platform for many students including myself to be groomed for the future of our nations and our continent as a whole.

If I had another chance to do a degree program again, I will choose Landmark a million times over anywhere else.

To God be the Glory.

Pathfinder Valeri Mbawi (Cameroon) Royal Set (2019) Graduate of Agricultural Extension and Rural Development

Pathfinders' TESTIMONIES



I was not even sure I would ever get to college, let alone graduate from one. The problem was not my grades, it was funding. And because of that, I had already resigned to the fact that I needed to look for other means of getting a head-way in life because university life was out-of-reach for me. Well, at least I thought so. God didn't. ... I just heard that there was a second university that our Chancellor had just started, and they were offering scholarships. And if one's grades were up to it, a 100% scholarship was possible. ...so I opted for what I could go for, because, in any case, I did have great plans for doing agriculture in my life, big time - so I was interested in taking agriculture. ... I came to Landmark

University, and the first thing that stood out to me is the sense of purpose and focus in the school. Discipline, integrity, character, responsibility, possibility mentality, faithfulness, all the virtues one could ever expect from a great leader and influencer were the emphasis of the day. It really did not matter where one came from - and for me that was Kenya, but whoever came in was quickly put on a visionary platform and directed towards everything from academic excellence to living a life of purpose. It made a lot more sense when we started taking our Total Man Concept classes, and everything became even more wholistic when at graduation level, the Towards Total Graduate courses were taught. .. You could literally expect a student to come in with no sense of purpose and graduate a game changer in society. Nothing's impossible. That's how the whole system is designed. And the students and staff are so warm and loving, I think I did not really feel I was an outsider, ... From hindsight, it is at Landmark University that I got a new lease of life, and the impact it had on my life is what made me a world-changer, a pathfinder who is unafraid of facing challenges with a win-win attitude. I am so grateful to God for the Chancellor and visioneer of Landmark University,

Dr. David Oyedepo, and all the academic and administrative staff that made my stay at Landmark University worthwhile. It is a time I cherish and will remember for my whole life. God bless Landmark University!

Pathfinder Cizarina Nasirumbi (Kenya) Dynamic Set (2015)

Graduate of Soil Science

Pathfinders' TESTIMONIES



Landmark University for me was an Oasis in the desert when I made the decision to attend. My ideal for a University seem only possible beyond the borders of Nigeria until I saw the advert of LMU and was convinced it was God's choice for me. I came in raw and hungry to get all that LMU offered. Where others saw rules I saw a training process. Landmark schooled me in leadership and refined me through all the seven core values. By the time I was through with my BSc. I didn't only get a degree but got a way of life that is superior to what I came in with. Today, I feel confident I can take up any challenge and deliver excellent result regardless of the odds. God bless Landmark University.

***Pathfinder Owolabi Akinyomade, Light Set (2014)
Graduate of Microbiology***



My experience as an undergraduate student at Landmark University, College of Agricultural Sciences and Department of Agricultural Economics prepared me well for my Graduate study in Sustainable Agriculture.

Studying Economics helped me developed critical thinking skills I use each day when making recommendations to Management regarding the financial implications of attracting new customers, developing new products, or utilizing new business strategies as a Public Relations Officer in my organization.

Classes such as Econometrics enhanced my ability to apply economic theory within the context of data analysis.

The core values of spirituality and integrity ingrained in me from Landmark University have distinguished and opened unimaginable doors for me in my career and journey of life.

Landmark University was indeed a home away from home.

Long live Landmark University.

Pathfinder Ojo Zebulun, 2020 Graduate of Agricultural Economics

Landmark University Kings and Queens **SPEAK**

The privilege of being a student of Landmark University is what I will forever be grateful to God for. Landmark University is not just a university but also a training ground where giants, pathfinders and world changers are raised.

Her unique value system has shaped and endowed me with the right knowledge and mindset needed to solve real life problems.

Thank you Jesus for making me a student of the Amazing Landmark University. This is my Landmark testimony

King LEWIS DIVINE, 500L Animal Science



Landmark University is an amazing University; it's a school that instills values and moulds its students into trailblazers, pathfinders and world changers. I gained admission into Landmark University in 2018 and as since then shaped me into a woman of values. The vision and mission of the University is reflected in its students with the core values imbedded in its students. Landmark University has beautiful souls cutting across faculty, staff and students and gorgeous scenery. The students are shaped into royalties and it is evident in the in our lifestyle. Indeed students of Landmark University, in this century are leaving a legacy that we were legendary

Queen SANNI OMOLOLU, 400L International Relations

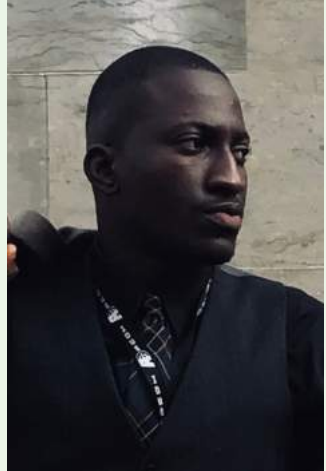


Landmark University Kings and Queens **SPEAK**

As a student of the College of Agricultural Sciences, I am so grateful for the platform Landmark University has created for me to explore my interests in the field of Agriculture. Coming to this school, I truly felt like I had found a home. In addition to that, being a very social and creative individual, the opportunity given to me to be the Campus Life Chairman has completely restructured the way in which I handle all the social activities in my life. I am truly grateful and pleased with the person I have become and am becoming.

King Awoyungbo Gideon

400Level Agricultural Extension and Rural Development



Landmark University has impacted on my personal, spiritual and academic life altogether. The Responsibility core value has really changed my approach to life and made me more accountable and reliable to any task I am given. The activities on campus has unleashed my true passion and potential towards the things I am skilled at.

Landmark University has well equipped learning environments such as the Library, Large and comfortable classes with installed smartboards, Computer laboratories etc. The University is blessed with highly qualified faculty and staffs who are willing and ready to groom students and patient to give audiences to students and guide them passionately. Choosing Landmark University is the right and the best choice you can ever make and I am proud to make that choice.

Queen Oyekan Tioluwani Princess

200Level International Relations



Landmark University Kings and Queens **SPEAK**

Landmark University is an amazing and world acclaimed institution, feature on Times Higher Education ranking as one of the top universities in the world. All the seven (7) core values (Spirituality, Possibility Mentality, Capacity Building, Integrity, Responsibility, Diligence and Sacrifice) of the University has impacted me greatly. With the Capacity Building as one of our Core Values in Landmark University, I have been able to discover the person in me for broader and better opportunities. My Landmark University experience is one I will never forget and I will live to tell the story anywhere in the world.

King Yusuf Abdulmutalib Gideon
200Level Sociology



My early days in Landmark University were ones I won't forget. Stepping into the university for the first time, I was awed by the massive infrastructure and beautiful surroundings. Over the course of my stay in this great institution, I have had a number of encounters that will stay with me for as long as I live. The University's core values have impacted my life both within and outside the walls of the University. I am eternally grateful for the person I have been shaped to be by this school, not only in my spiritual life but also my academic life as well as my creative life. This school has helped me embrace opportunities to further my writing skills, and inspired several other talents and abilities through responsibilities. I am eternally grateful for that deciding moment when I chose Landmark University.

Queen Jerugba Oluwafeyikemi
400 Level Economics



TESTIMONIES OF ***Proud LMU Parents***



Bringing our daughter into Landmark University was one of the beautiful decisions that God helped us to take. It has paid off. Our daughter graduated colourfully and had grown spiritually and morally as the years rolled by. After her NYSC, she was retained in her place of primary assignment with an international organisation. She runs a flourishing perfume business alongside.

Her junior brother and two other cousins are also at LMU including the wards of some of our friends. The children had improved and are worthy examples. Landmark University has become our Numero Uno for tertiary education.

The truth is that the academic, moral and spiritual platforms put in place at Landmark University is outstanding and has no doubt positioned the students as Pathfinders – Light of the world and salt of the earth.

Engr. (Pst.) David & Dcns. Olatokunbo Shittu - Abuja



Landmark University is a very good and standard University. My daughter a Civil Engineering Student will always come home glad with testimonies of being in a good University with good spiritual backings and no corruption."

Mrs. Ademola - Abuja

TESTIMONIES OF ***Proud LMU Parents***



"It was an easy decision for my last son to have chosen Landmark University. The Yoruba adage says "if an orange is sweet you will pluck more than one", from the transformation I witnessed from his brother who attended Landmark University. I have no doubt in my mind that it is a must place to go for tertiary education, no regret in sending my children to Landmark University. I urge other parents who are considering picking Landmark University, should go ahead because definitely they won't regret it. Landmark University; truly amazing, forward ever!!!"

Mr. Abiodun M. Adeoye - Lagos



"Locating Landmark University off the noise, the bustling and hustling of the city is quite commendable. It will help students to concentrate on their studies. In fact, I am astounded by the beautiful landscape, lush lawns, the spacious environment, young and impressive staff and the cutting-edge facilities."

Dr (Mrs) Nkiruka Nwachukwu – Lagos



"... I am encouraged by the instalment mode of payment of school fees. It is payer-friendly and world class."

Mr. Fabian Kponu – An Administrator, He's Alive Chapel – City Gate Sanctuary, Lagos

TESTIMONIES OF ***Proud LMU Parents***



"I chose Landmark because I wanted my son to start adulthood in a place that would nurture his kind heart into strength. I wanted a place where he would learn to be a leader. Few months ago, I took my son to Covenant University and there, I was also impressed by the orderliness created in that place. I appreciated the ecosystem and the vision it took to start the school. Delightedly, at Landmark, I could see the same things. Creating a university as well as any other world class project requires a mind large enough to think about scale and small enough to tweak out the details. The woman next to me asked if I was a Winner (a Living Faith Church Member) and I said I was not. The common denominator for parents was not church membership but a desire to see our children spend their early adult years in an institution that would ingrain order and discipline into them as well as quality learning."

Mrs Pyemwa Deshi [R] with her children, Reimor [L] and Annan [M] during the 10th Matriculation Ceremony

TESTIMONIES OF ***Proud LMU Parents***



Chukwuebuka in Landmark University – A Testimony from a Mother's Lens

Landmark University has provided Chukwuebuka Oluwaseun Mordi the sublime environment to acquire entrepreneurial skills in creating photographic contents that are fascinating and sellable. He is beginning to see things differently and has become stouthearted to explore the potential of incorporating photographic ideas with civil engineering to generate contents for personal and corporate use. For one of his works to be featured in Vogue Italia, a global iconic fashion and lifestyle magazine while still on campus, shows the extent to which he has gone in abstracting photographic contents that have depth of style and meaning for humanity. This is one of the numerous things that studying in Landmark University has bequeathed to Chukwuebuka.

– ***Olubukola Mordi (Mrs.) - Abuja***



"My son came to Lagos with the School Bus Arrangement. He's home already.

Thanks so much. God bless you richly.

My other kids went through Non-Private Universities.

Landmark University (LMU) is my first direct contact with a Private University, and I must say I am impressed.

I will vote for you any day.

You are the best! Yes you are !!"

Mrs. Obioma Okolie (LMU Parent)

Comments by **UNIVERSITY** **GUESTS**



"Landmark University is a place where dreams are formed and translated into reality, which is the thrust of training at the University. It is a stunningly beautiful campus that all the students must be proud of, as this is the legacy of excellence of the founding fathers of the university which is the ancient Landmark that must not be removed."

**Dr. Akinwumi Adesina,
President of the African Development Bank**



"I came to Landmark University to attend the conference of the Nigerian Institute of Agricultural Engineers [16-20 September 2019] and gave little thought to the site location other than to assume it would be a reasonable venue to hold the meeting. Well, after spending much of the week on campus, I have come to appreciate the energy and forward-looking spirit driving Landmark toward becoming a world-class institution. The facilities, the farm, the programmes and, most of all, the people are tremendous. A short visit with Vice Chancellor, Professor Adeniyi Olayanju, is all it takes to fully realize that this university is on a clear path toward greatness. Keep up the fantastic work and world class status will be yours."

**Professor Darrin Drollinger, Executive Director,
American Society of Agricultural and Biological
Engineers**



ADMISSION REQUIREMENTS

GENERAL REQUIREMENTS

The minimum entry requirements for admission into Landmark University are credit passes in 5 subjects at the SSCE/GCE O'Level/NECO/NABTEB or its equivalent obtained at not more than two sittings. The subjects passed must include English Language, Mathematics and other subjects relevant to the proposed course of study. Candidates are also to note that, there are other requirements that may be specific to a College and/or a programme.

UTME PREREQUISITES

Candidates applying to Landmark University should note the following:

- i) Candidates must have sat for the current year Unified Tertiary Matriculation Examination (UTME) of the Joint Admissions and Matriculation Board (JAMB) and attained the prescribed cut-off marks as a statutory requirement for entry into Nigerian Universities.
- ii) Applicants are strongly advised to ensure that their UTME subject combination qualifies them for their chosen programme in Landmark University.
- iii) Candidates who did not choose Landmark University in the current year UTME are free to apply for admission into the University
- iv) In addition to the above, Landmark University conducts a Post UTME Screening Exercise for all candidates seeking admission into the University. Applicants may however, not be admitted without fulfilling the demands of the screening exercise.

COLLEGE OF AGRICULTURAL SCIENCES

DEGREE REQUIREMENTS

Programmes

- * Agriculture Economics
- * Agriculture Extension & Rural Development
- * Animal Science
- * Aquaculture and Fisheries
- * Crop and Soil Science



Students taking practical classes at the Teaching and Research Farm



Screen House Farming

REMARKS BY THE **DEAN, COLLEGE OF AGRICULTURAL SCIENCES** **DR. OLAYINKA. O. ALABI**



The fulcrum upon which the University is standing is AGRARIAN. The College of Agricultural Sciences, alongside other units, was established in March, 2011 to spearhead the agrarian revolution. Regardless of students' area of specialization in Agricultural Sciences, Pure and Applied Sciences, Engineering and Business and Social Sciences, the College provides a platform to train all students in the University using the

Agripreneurship programme to specifically equip the students for sustainable Agribusiness thereby giving them a platform to address the issue of food insecurity within and outside the country and reduce unemployment rate.

Aside from intensive research, the College is confident in her high profile faculty and certified technologists for student training in all areas of agriculture, Crop and Soil sciences, Animal Science, Agricultural Economics and Agricultural Extension and Rural Development. They turn the students into total graduates capable of engaging their immediate environment in all areas of agricultural production for maximum profitability.

The College has five programmes housed within the Second College Building on campus. With the support of Proprietor Base, the College has cutting-edge equipment, first-class laboratories, experimental fields and facilities that are productively engaged in innovative research and training. These enable us to induct our students into the business of agriculture so that on or before graduation, they become Agripreneur in different areas of agribusiness for productivity, profitability and also for motivation, thereby become a compelling

force for other youths to be engaged in the field of agriculture and agribusiness.

Through the life-applicable teachings instilled in our graduates fondly called PATHFINDERS, a large number of graduates are making exploits in their respective areas of calling and in whom we are proud of. This is based on feedbacks we are getting from the College based Alumni. Two of them are Mr. Etieno Essien Sunday a primus set of Landmark University that graduated in 2015 is the Biosecurity Personnel Officer at OLAM Nigerian Limited and CEO of SECTAGREEN Limited located at Kaduna, and Mrs Cizarina Nasirumbi, an International Soil Science Programme student who graduated in 2015, is a Co-Founder of Yellow Grove Farms located in Nairobi Kenya and many others who are positively affecting the society through their God-given creativities.

Without any reservation, I humbly recommend and beseech our intending students to subscribe to any of the five Agricultural Sciences Programmes (Agricultural Economics, Agricultural Extension and Rural Development, Animal Science, Aquaculture and Fisheries Management and Crop and Soil Sciences here at Landmark University.

I welcome you to amazing Landmark University where you can make your life count.

COLLEGE OF AGRICULTURAL SCIENCES

AGRICULTURAL ECONOMICS

Programme Duration: 5 years

UTME Criteria: English Language, Chemistry and any two of Biology, Agricultural Science, Mathematics, Physics, Economics.

O'Level Criteria: English Language, Mathematics, Chemistry, Biology or Agricultural Science and Physics or Economics or any Social Science subject.

AGRICULTURAL EXTENSION & RURAL DEVELOPMENT

Programme Duration: 5 years

UTME Criteria: English Language, Chemistry and any two of Biology, Agricultural Science, Mathematics, Physics, Economics.

O'Level Criteria: English Language, Mathematics, Chemistry, Biology or Agricultural Science and Physics or Economics or any Social Science subject.

ANIMAL SCIENCE

Programme Duration: 5 years

UTME Criteria: English Language, Chemistry and any two of Biology, Agricultural Science, Mathematics, Physics, Economics.

O'Level Criteria: English Language, Mathematics, Chemistry, Biology or Agricultural Science and Physics or Economics or any Social Science subject.

AQUACULTURE AND FISHERIES MANAGEMENT

Programme Duration: 5 years

UTME Criteria: English Language, Chemistry, Physics /Mathematics, any one of Biology/ Agricultural Science/ Geography

O'Level Criteria: English Language, Mathematics, Chemistry, Biology/Agricultural Science/Animal Husbandry/Fisheries/ Food &Nutrition and any one from Physics, Geography and Economics

CROP AND SOIL SCIENCE

Programme Duration: 5 years

UTME Criteria: English Language, Chemistry and any two of Biology, Agricultural Science, Mathematics, Physics, Economics.

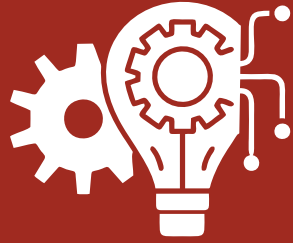
O'Level Criteria: English Language, Mathematics, Chemistry, Biology or Agricultural Science and Physics or Economics or any Social Science subject.

COLLEGE OF ENGINEERING

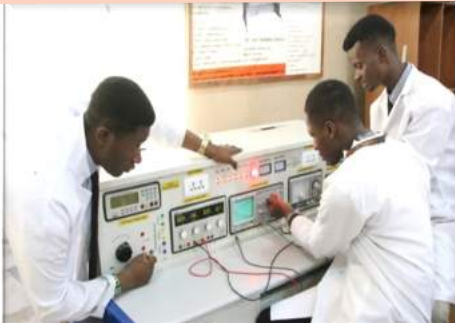
DEGREE REQUIREMENT

Programmes

- * Agricultural and Bio-systems Engineering
- * Chemical Engineering
- * Civil Engineering
- * Electrical & Information Engineering
- * Mechanical Engineering
- * Mechatronics Engineering



Landmark University Engineering Workshop Building



Students at the Engineering Workshop

REMARKS BY THE **DEAN, COLLEGE OF ENGINEERING** **PROF. JOHN O. OJEDIRAN**



The times we are in and the challenges confronting humanity demand a radical approach to solution-driven innovations. Engineering hold the key for these sustainable solutions. The College of Engineering on this campus constantly seeks ways of remaining relevant locally while maintaining a global focus through collaborative research opportunities. With the agrarian mandate of the university, our

curricula properly situate engineering in the entire process of exploring hidden treasures in the earth, thus preparing students to face contemporary challenges, be wealth creators and make the world a better place. The total man concept approach in our training empowers students for a fulfilling career and makes them relevant to society.

Our students have continued to prove their worth in regional and national competitions with cutting edge innovations. This success comes from our top-notch faculty with research findings in high-ranking journals. With the university's emphasis on research clusters revolving round the mandate, and well-equipped laboratories and workshops, students and faculty are constantly and continuously encouraged to make contributions to this over-arching focus. This exceptional training programme provides a vibrant learning culture and ample leadership opportunities for our students, making them profession-ready

graduates such that they are better prepared to find their feet in a competitive world.

Our country-side location provides an ambience, home away from home, conducive for teaching, learning and research. This is a unique advantage. Our in-loco parentis role further makes this university a place to be. It is simply amazing. I am extremely proud of the learners, leaders, and thinkers who make up the College of Engineering and I'm honored to be part of this winning team. I invite you to browse our Website, learn more about our programmes and be inspired by the accomplishments of our faculty and students. There is no better time to do so.

Welcome to the Landmark University College of Engineering.

COLLEGE OF ENGINEERING

AGRICULTURAL & BIO-SYSTEMS ENGINEERING

Programme Duration: 5 years

O'Level Criteria: English Language, Mathematics, Physics, Chemistry and one other science subject (selected from Further Mathematics, Agricultural Science, Biology, Technical Drawing, Food and Nutrition)

UTME Criteria: English Language, Mathematics, Physics, Chemistry.

CHEMICAL ENGINEERING

Programme Duration: 5 years

O'Level Criteria: English Language, Mathematics, Physics, Chemistry and either credit pass in Further Mathematics, Biology or Technical Drawing.

UTME Criteria: English Language, Mathematics, Physics, Chemistry.

CIVIL ENGINEERING

Programme Duration: 5 years

O'Level Criteria: English Language, Mathematics, Physics, Chemistry and one other science subject (Further Mathematics, Agricultural Science and Technical Drawing or any other recognized science subject))

UTME Criteria: English Language, Mathematics, Physics, Chemistry.

ELECTRICAL AND ELECTRONICS ENGINEERING

Programme Duration: 5 years

O'Level Criteria: English Language, Mathematics, Physics, Chemistry and either credit pass in Further Mathematics, Biology or Technical Drawing.

UTME Criteria: English Language, Mathematics, Physics, Chemistry.

MECHANICAL ENGINEERING

Programme Duration: 5 years

O'Level Criteria: English Language, Mathematics, Physics, Chemistry and one other relevant science subject.

UTME Criteria: English Language, Mathematics, Physics, Chemistry.

MECHATRONICS ENGINEERING

Programme Duration: 5 years

O'Level Criteria: English Language, Mathematics, Physics, Chemistry and any other relevant science subject

UTME Criteria: English Language, Mathematics, Physics and Chemistry

COLLEGE OF BUSINESS & SOCIAL SCIENCES

DEGREE REQUIREMENTS

Programmes

- * Accounting
- * Business Administration
- * Economics
- * International Relations
- * Mass Communication
- * Political Science
- * Sociology



Students of the College having a practical session at the Econometric Laboratory

REMARKS BY THE **DEAN, COLLEGE OF BUSINESS & SOCIAL SCIENCES** **DR. BEN-CALEB EGBIDE**



It is with a heart beaming with great joy I welcome you to the College of Business and Social Sciences, Landmark University. The College is a place full of unlimited possibilities, offering unlimited opportunities. Here, we design a production line that will guarantee our desired end product by exploring treasures in the midst of trash, empowering destinies for maximum impact, and raising an army of reformers.

The College of Business and Social Sciences is blessed with dedicated and professional faculty and staff who are ever ready to provide the necessary guidance for our students from all backgrounds and locations.

The College has seven (7) programmes namely; Accounting, Business Administration, Economics, International Relations, Mass Communication, Political Science and Sociology. The good news is that, all the programmes are fully accredited by National University Commissions (NUC) and relevant professional bodies like ICAN, ACCA and NIM among others.

I need not say that the College is equipped with state-of-the-art facilities that will make you excel in your academic pursuit, the reason for some of our students with multiple certificates (academic and professional).

The University operates a collegial system and the College of Business and Social Sciences' faculty, staff, and students work with other colleges and units on campus to actualize the vision of the University. It is on this note we look forward to receiving you at Landmark University and in the College of Business and Social Sciences in particular.

COLLEGE OF BUSINESS AND SOCIAL SCIENCES

ACCOUNTING

Programme Duration: 4 years

O'Level Criteria: English Language, Mathematics, Economics or Accounting, a Science/Social Science subject and any Commercial subject.

UTME Criteria: English Language, Mathematics, Economics and any other Commercial/Social Science subject.

BUSINESS ADMINISTRATION

Programme Duration: 4 years

O'Level Criteria: English Language, Mathematics, Economics or Commerce, one Science/Social Science subject and any other subject.

UTME Criteria: English Language, Mathematics, Economics and any other Commercial/Social Science subject.

ECONOMICS

Programme Duration: 4 years

O'Level Criteria: English Language, Mathematics, Economics, a Science/Social Science subject and any other subject.

UTME Criteria: English Language, Economics, Mathematics and any other subject.

INTERNATIONAL RELATIONS

Programme Duration: 4 years

O'Level Criteria: English Language, Mathematics, Economics, History or Government or Civil Education and at least a pass in a Science subject or a credit level pass in a Arts/Social Science/Commercial subject.

UTME Criteria: English Language, Government or History plus two other Arts/Commercial/Social Science subject.

MASS COMMUNICATION

Programme Duration: 4 years

O'Level Criteria: English Language, Mathematics, Literature in English, and two other arts/social science subject

UTME Criteria: English Language, Literature-in-English and Two Arts/Social Science subjects

POLITICAL SCIENCE

Programme Duration: 4 years

O'Level Criteria: English Language, Mathematics, Economics, History or Government or Civil Education and at least a pass in a Science subject or a credit level pass in a Arts/Social Science/Commercial subject.

UTME Criteria: English Language, Government or History plus two other Arts/Commercial/Social Science subject.

SOCIOLOGY

Programme Duration: 4 years

O'Level Criteria: English Language, Mathematics, History or Government or Economics, any other subject and at least a pass in a Science subject or a credit level pass in a Arts/Social Science subject.

UTME Criteria: English Language, Government or History, one Social Science subject and any other subject.

COLLEGE OF PURE & APPLIED SCIENCES

DEGREE REQUIREMENTS

Programmes

- * Biochemistry
- * Computer Science
- * Food Science and Nutrition
- * Industrial Chemistry
- * Mathematics
- * Microbiology
- * Physics



Students during a Practical Class

REMARKS BY THE

DEAN, COLLEGE OF PURE & APPLIED SCIENCES

PROF. AYODELE A. ADEBIYI



The College of Pure and Applied Sciences (CPAS), Landmark University welcomes you to this Academic session. The College is known for driving excellent teaching and high-impact research in the University. The graduates of the College are highly sought after in the labour market. The graduates of the College are comparable with graduates of World-Class Universities. The College currently runs seven undergraduate programmes Biochemistry, Computer Science,

Industrial Chemistry, Mathematics, Microbiology, Food Science and Nutrition, and

Physics.

The above sciences are very important in today's society since they serve as guide for development, innovation and technology. They are essential components to the formation and evolution of every modern society.

If you decide to pursue a degree in one of the above disciplines, you can be sure that our Faculty will provide you with all necessary tools to cope with success in any challenges you will face in your future career within today's highly demanding and competitive global environment. The time lag between scientific discovery and technological application has shortened considerably, where something that took decades to get to the end user now needs only a few years. After graduating from any Programme of our College, you will be in a position to start a successful career in any of the interesting areas of Science.

It is therefore our goal at the College of Pure and Applied Sciences to equip you with the knowledge, skills and self-confidence to quantum leap with us. So come and join us as we embark on this journey together.

COLLEGE OF PURE AND APPLIED SCIENCES

BIOCHEMISTRY

Programme Duration: 4 years

O'Level Criteria: English Language, Mathematics, Biology, Chemistry and one of the following Physics, Agricultural Science, Food and Nutrition.

UTME Criteria: English Language, Biology, Chemistry, Physics or Mathematics.

COMPUTER SCIENCE

Programme Duration: 4 years

O'Level Criteria: English Language, Mathematics, Physics, Chemistry and any one of the following: Biology, Agricultural Science, Computer Science, Data Processing, Further Mathematics

UTME Criteria: English Language, Mathematics, Physics and any one of Chemistry, Biology, Agricultural Science, Economics and Geography.

FOOD SCIENCE AND NUTRITION

Programme Duration: 4 years

O'Level Criteria: English Language, Mathematics, Chemistry, Food & Nutrition /Biology/ Agricultural Science, any one of Physics /Economics/any Social Science subject

UTME Criteria: English Language, Chemistry, Biology or Agricultural Science, and any other subject from Food & Nutrition/Catering & craft/Mathematics/Physics/Economics

INDUSTRIAL CHEMISTRY

Programme Duration: 4 years

O'Level Criteria: English Language, Mathematics, Physics, Chemistry

and any one of the following Biology, Geography, Further Mathematics, Agricultural Science and Computer Studies.

UTME Criteria: English Language, Chemistry and any two science subjects from the following: Mathematics, Physics and Biology/Agricultural science.

MATHEMATICS

Programme Duration: 4 years

O'Level Criteria: English Language, Mathematics, Physics and any other two science subjects or any one Science subject and one social Science subject.

UTME Criteria: English Language, Mathematics and any two of Physics, Chemistry, Biology, Economics, Agricultural science, Computer Studies and Data Processing.

MICROBIOLOGY

Programme Duration: 4 years

O'Level Criteria: English Language, Mathematics, Biology, Chemistry and Physics or one of Further Mathematics, Technical Drawing, Agricultural Science, Food and Nutrition.

UTME Criteria: English Language, Biology, Chemistry, Physics or Mathematics.

PHYSICS

Programme Duration: 4 years

O'Level Criteria: English Language, Mathematics, Physics and any other two science subjects or one Science subject and one social Science subject.

UTME Criteria: English Language, Mathematics, Physics and any other subject.



Other Key Information

FEES

The University has a flexible, pocket-friendly payment protocol of 40%-20%-20%-20% instalments spread across the academic session.

APPLICATION

We welcome applications from across the globe, and it is our aim to make the process of applying a smooth experience.

GUIDELINES FOR APPLICATION

1. Visit our Admission portal via <http://www.admission.lmu.edu.ng/app> to complete the application payment form.
2. Complete the application payment form with the necessary and accurate details. Please note that your UTME registration number, a valid email address and GSM number will be required.
3. After completing and submitting the application payment form, a preview of the application is display. Verify its authenticity and correctness, then click on "Pay" button to make payment.
4. You will be redirected to the payment page where you are expected to make payment of N10,000 application along with a processing charge depending on the payment channel selected. Please note that you will need an ATM Card (Verve, Visa, MasterCard or E-Transact Card) to complete your payment.
5. After completing the payment, you will be redirected back to our admission portal and a message and SMS containing your login credential and further details will be forwarded to the supplied email address and phone number respectively.
6. You are expected to return to our Admission application portal via <http://www.admission.lmu.edu.ng/app> to login with the credentials, upload

your passport (which must be in JPEG format and not more than 200KB in size) and complete your application form.

7. After completing the application form, you are expected to submit and print out copies of the completed form, which contains the details supplied by you and your application form number.

8. Please note that there will be POST-UTME screening exercise, which will take place at a later date to be announced. The POST-UTME screening exercise can be virtual, on-campus or at the different designated locations across the nation depending on candidate's choice. Further information will be communicated via the email address and phone number supplied when filling the application form.

PLEASE NOTE: You are expected to upload the following documents and come along with the original copies and photocopies of all necessary documents at the scheduled Post-UTME screening date

- » Printed Application Form
- » Copy of UTME Result Slip
- » Copy of 'O' Level results
- » 2 Passport Photographs
- » Original copy of sponsorship letter from Parents/Guardian
- » Letter from your religious leader
- » Copy of Birth certificate
- » State of origin certificate

Admission Policy

As a Christian Mission University, intending students of the University must be God fearing, and unreservedly committed to obeying Him. Prospective students are expected to exhibit core value-driven disposition as embedded in the University's Core Values, as thus:

- Spirituality
- Possibility Mentality

- Capacity Building
- Integrity
- Responsibility
- Diligence
- Sacrifice

PROHIBITED ITEMS

The under listed items are prohibited in Landmark University. New and Returning students are to please take note and ensure compliance:

- » Cigarettes
- » Alcoholic beverage
- » Any form of illicit drugs
- » Knockouts/bangers of any kind
- » Guns and bullets
- » Lethal weapons and injections
- » Occult and cult-related materials
- » Self-Medication (Western or Orthodox)
- » Condoms and contraceptives
- » Landlines, GSM Cell Phones, SIM cards, all SIM enabling gadgets and phone accessories
- » Weight, javelin, shot-put
- » Binocular
- » Candles
- » Cooking utensils such as (but not limited to) pots, saucepans, rice cookers, microwave ovens, electric boiling rings, blenders, grillers, hot plates and toasters

- » Bottled drinks, foods and/or refreshments
- » Metal/Stainless steel cutlery sets
- » Raw food items
- » Contraband clothing (jeans, chinos, alanshi, spaghetti wears, knee-length/short skirts, leggings, any form of transparent materials, etc. as found in the current student handbook)
- » Electric blankets, mattress or beds
- » Electric boiling ring
- » Hair dryers
- » Hair straighteners
- » Refrigerator
- » TV Sets, TV Cards, Android TV Boxes and TV Antenna
- » Ungodly musical tapes and CDs
- » Video machines, videotapes, DVD and VCD player
- » Computer Games (e.g. Play Station)
- » Items intended for sale or business activities
- » Items requiring registration before use

Kindly note that pant trousers, whose width is less than 15 inches is not allowed and thus a contraband item.

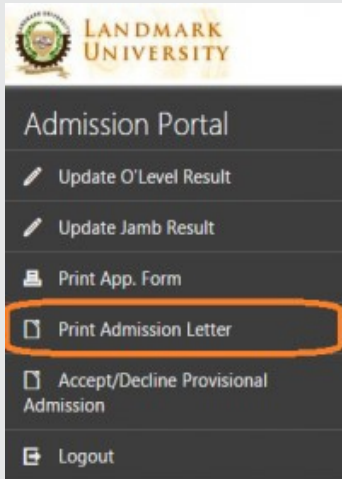
HALLS OF RESIDENCE REQUIREMENT

Under listed are the minimum items required for students' comfort in the Halls of Residence. Kindly note also that each student has limited space; hence, each item quantified “as required” should be acquired in moderate quantity.

| S/N | ITEM | QUANTITY |
|-----|--|--------------|
| 1 | Pillow | 1 |
| 2 | Pillow Case | 2 |
| 3 | Blanket | 1 |
| 4 | Duvet | 1 |
| 5 | Bed Sheet 4" X 6" | 2 |
| 6 | Mosquito Net | 1 |
| 7 | Plastic Bucket | 1 |
| 8 | Plastic Hangers | 1 Dozen (12) |
| 9 | Torch Light and/or Rechargeable Reading Lamp | 1 |
| 10 | Batteries | 1 |
| 11 | Set of Plastic Cutlery (Metal Cutlery is not allowed) | 1 of Each |
| 12 | Automated Electric Kettle(1500 watts) | 1 |
| 13 | Pressing Iron | 1 |
| 14 | Padlock and Key Ring | 4 Sets |
| 15 | Rain Coat or Umbrella | 1 |
| 16 | School Bag | 1 |
| 17 | Toiletries | Varied |
| 18 | Laptop (Optional) | 1 |
| 19 | Clothing (it is advisable that a few warm clothing be acquired, to suit the sometimes cold weather of Omu-Aran) | As Required |
| 20 | Feeding/Up-Keep Allowance per semester (4 – 5 months) | As Required |
| 21 | Provision | As Required |
| 22 | Exercise Books, Hard Cover Note Book and other Writing materials etc. | As Required |
| 23 | Pant Trousers, Ties, Shirts (Corporate) | As Required |
| 24 | Hand Hair Dryers (Optional) | 1 |
| 25 | Hair Straighteners(Optional) | 1 |

PRINTING OF ADMISSION LETTER

1. To Download Your Letter of Provisional Admission, Click on “Print Admission Letter” Menu on the left.

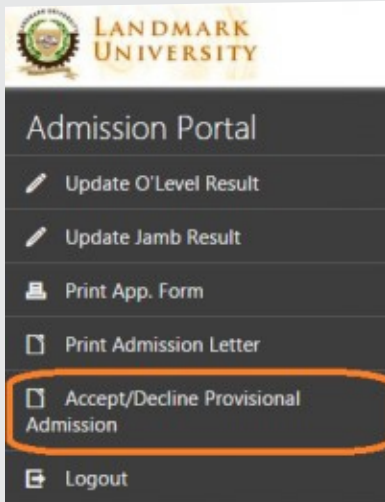


2. If you have the required JAMB Combination for your admitted course, you will see the “Print Admission Notification” Button below your O'Level requirements. Click on the Button to download your provisional admission letter.

| REQUIRED | SELECTED | O'LEVEL GRADE | REQ. AVERAGE |
|--|---------------------------------|---------------|--------------|
| English | ENGLISH LANGUAGE USE OF ENGLISH | B5 | 4 |
| Mathematics | MATHEMATICS | C6 | 1 |
| Chemistry | CHEMISTRY | C5 | 2 |
| Physics | PHYSICS | C4 | 3 |
| Biology/Agricultural Science/Further Maths/Technical Drawing | BIOLOGY | B5 | 4 |
| TOTAL | | | 14 |

Below the table, there is a green button labeled "Print Admission Notification" which is highlighted with an orange rectangle.

3. After you have downloaded your letter of provisional admission, you are required to accept the provisional admission if you are satisfied with the conditions stated on the letter. To do this, click on “Accept/Decline Provisional Admission” Menu on the left.



4. Further steps will be communicated to you on the mode of fee payments.

Landmark University..... “Breaking New Grounds”



Concept & Designed by
Corporate & Public Affairs
Landmark University